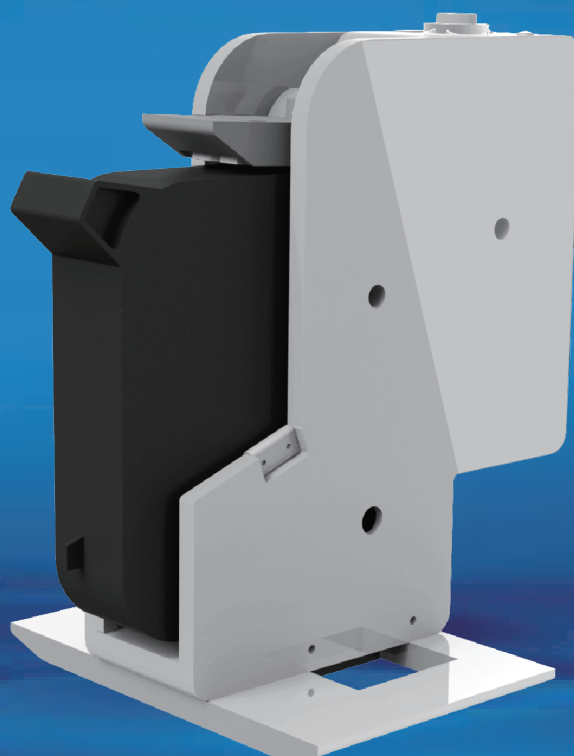




EASYJET

Creative Design / Surpass Tradition

Easy operation · Economy

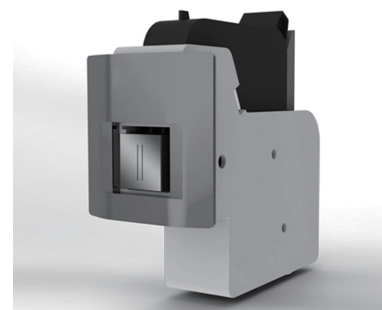
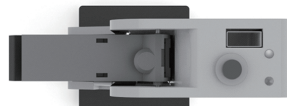
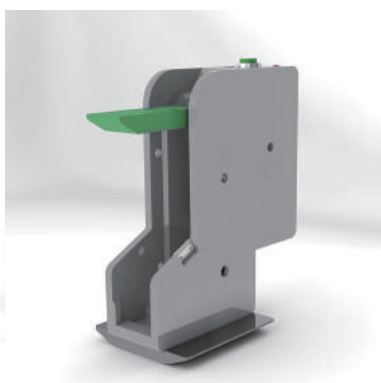


EASYJET is the smallest and easiest to operate printer developed based on HP print tech. It is with high print speed and high resolution. It can print variable data including text, batch number, data of manufacture & expire date and image, matching with various kinds of production lines from package machine supplier to system integrators. EASYJET takes PLC standard to control language drive, it can be used as a print engine. And third party equipment can control printer by serial

Highlights

- Easy operation, no need of any training.
- Full metal shell, industrial design and stronger.
- Take HP original driving board to make print effect higher quality.

Product details



Parameters

Print height

12.7mm

Print speed & Resolution

76 m/min@ 300 × 300DPI

150m/min@300 × 150DPI

Interface type

USB/ Sensor/Encoder/Warning light

Print type

Text, counter, team number , date, image

Temperature/Humidity

5°C~35°C / 10%~90%

Print system

HP TIJ2.5

Operation

Button

Data transfer way

U disk import

Other

Simulation speed print\Simulation sensor print

Max power

120W

Power

110-220VAC 50/60Hz

Size

